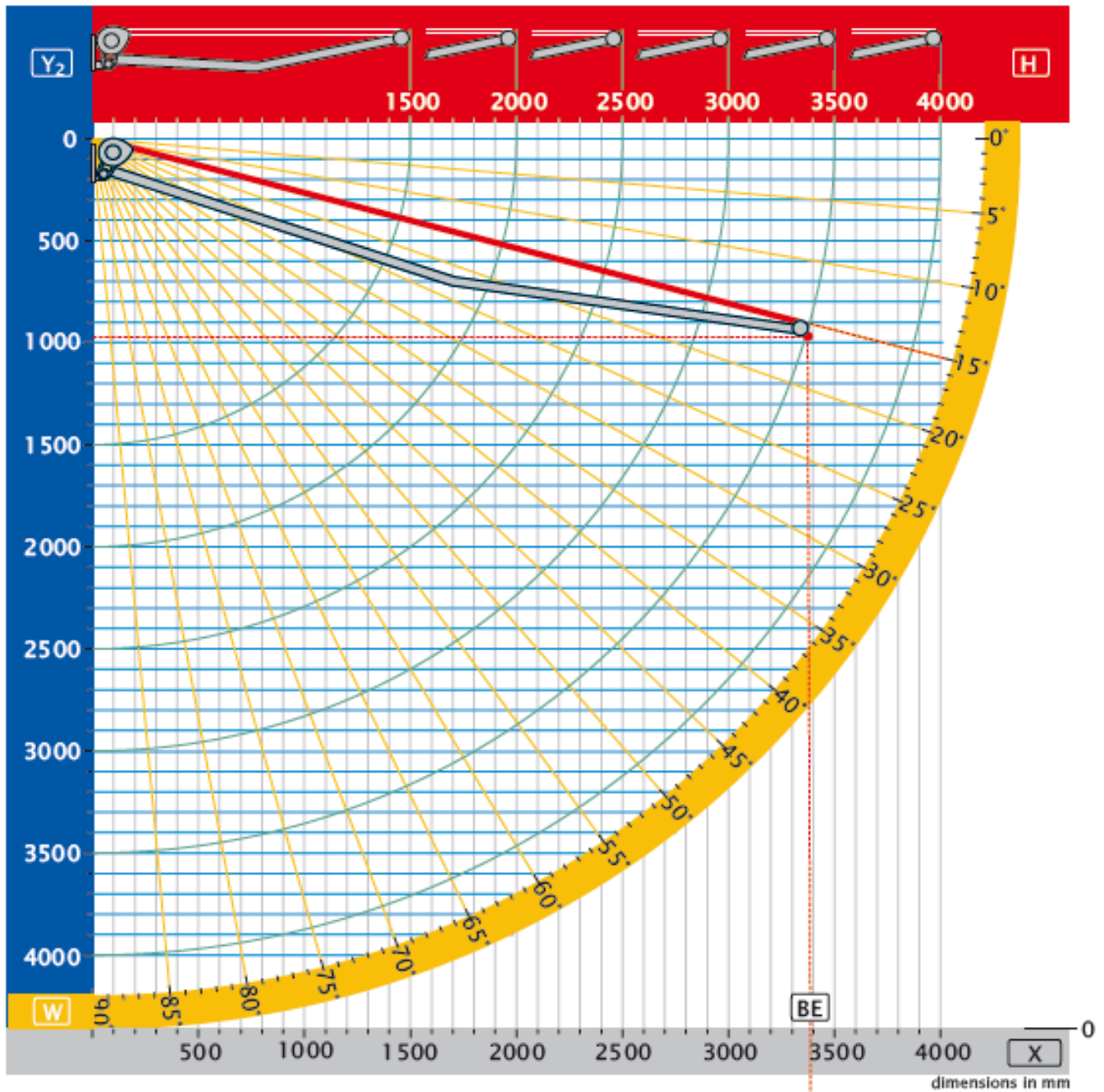


Headroom clearance at varying pitches



- H** = projection
- W** = pitch
- X** = horizontal projection
- Y₁** = fixture height (to be determined on site)
- Y₂** = height difference
- DH** = headroom
- BE** = example

H = 3500
W = 15°
X = 3390
Y₂ = 980
DH = Y₁ - Y₂