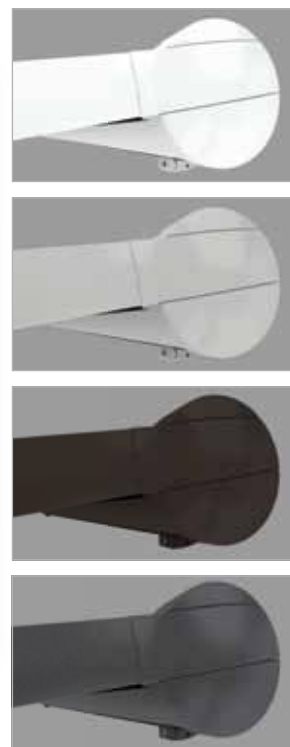
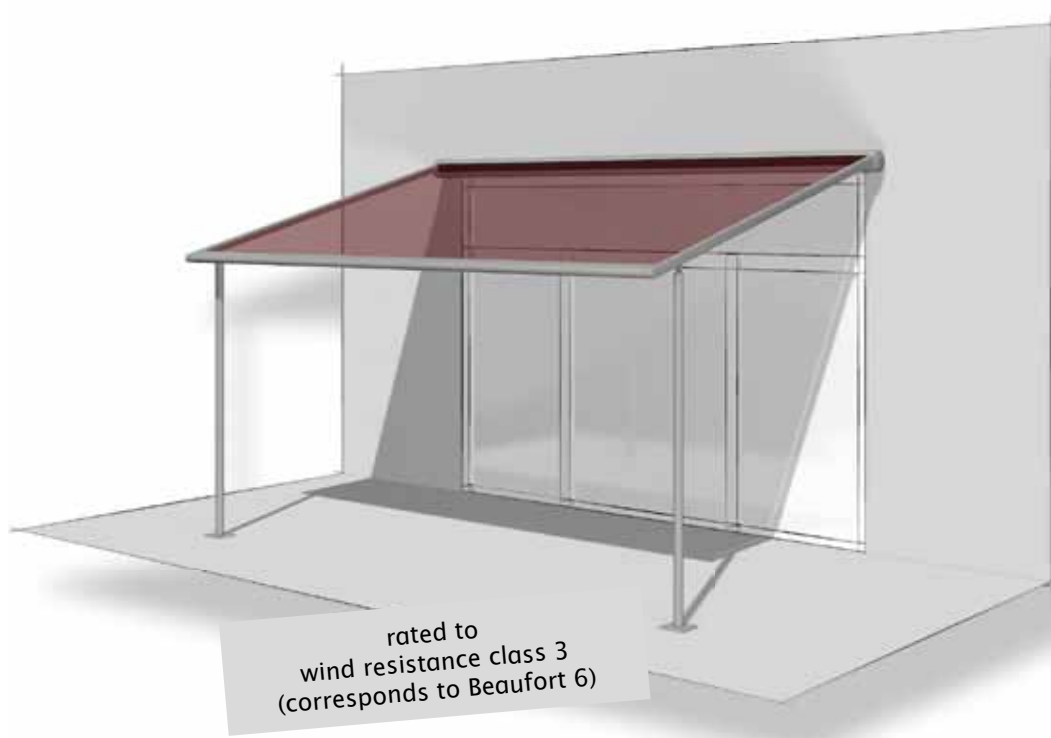


## markilux pergola 110

Stylish and extra sturdy – solar and weather protection for large areas. Large-scale solar protection for patios – the proven technology of the markilux 8800 conservatory awning with slender support posts – optionally with zip system



**markilux**



## markilux pergola 110

Stylish and extra sturdy – solar and weather protection for large areas. Large-scale solar protection for patios – the proven technology of the markilux 8800 conservatory awning with slender support posts – optionally with zip system

### Design features

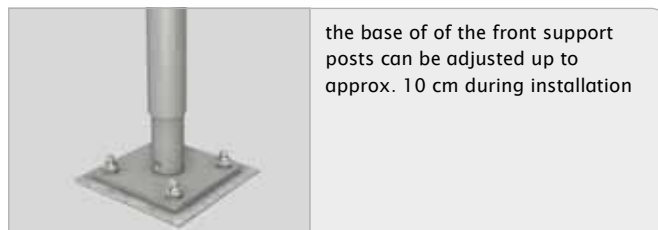
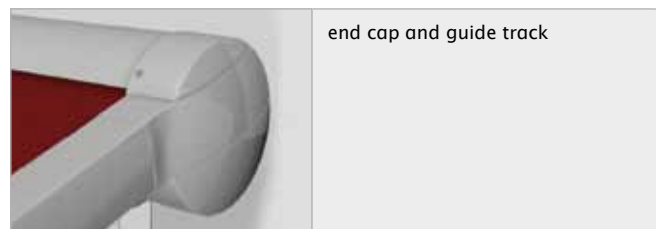
- the cassette profile, the guide tracks, the front profile and the front support posts complement one another perfectly and result in a large but nevertheless very elegant patio shading system
- large scale awning system resting on slender posts with unobtrusive lateral guide tracks
- for long-lasting attractiveness: the awning is powder coated in the standard colours traffic white, metallic aluminium or grey brown
- when fully extended the rounded front profile sits flush with the end of the guide tracks, giving the system a completely closed appearance

### Technical Specifications

- especially large extensions provide generous shade with high wind stability (wind resistance class 3)
- simple installation: fixture of the cassette to the wall and the posts to a concrete base by means of base plates.
- standard height of the front support posts 250 cm, other heights (36 cm to 250 cm) on request
- the round, front support posts further stabilise the awning in addition to the fixture points on the façade – this reduces the pull-out forces on the façade.
- water drainage is guaranteed at a minimum pitch of 14° to the horizontal, the maximum possible pitch is 45°

### Additional features

- polyester powder coating in the colours of the Lounge style line and all other RAL colours is available to individual order (prices on request, longer lead time)
- radio-controlled motor with markilux remote control – ergonomically shaped
- wall sealing profile to cover the gap between awning and wall; effective up to an awning pitch of 25°
- awning covers made of waterproof sunsilk, markilux perla FR, are available at a surcharge
- closed appearance thanks to zip system (optional) – the zip system does away with the annoying gap between the cover and the guide track



### Standard specification

motor

bonded awning cover

sunsilk snc fabric

sunsilk snc signature fabric

acrylic fabric 34

perfortex fabric

transolair fabric

### Standard frame colours

traffic white - RAL 9016

metallic aluminium - RAL 9006

grey brown - similar to RAL 8019

anthracite metallic - 5204

### Optional accessories

RTS motor with remote control

sun sensor and wind sensor

zip system

wall sealing profile

non-standard powder-coated finish

sunvas fabric

## Dimensions and configuration options

### Single unit 1 field, 1 motor

		awning fixture width / order width										minimum fixture width	
		150	200	250	300	350	400	450	500	550	600	hard-wired motor	radio-controlled motor
		74 - 150	151 - 200	201 - 250	251 - 300	301 - 350	351 - 400	401 - 450	451 - 500	501 - 550	551 - 600		
overall width		+10										60 Standard 67 zip System	70 Standard 77 zip System
extension	150												
	200												
	250												
	300												
	350												
	400												
	450												
	500												
	550												
600													
number of brackets		2						3					

 = available, optionally with zip system

dimensions in cm

#### Type of shading

exterior	●
interior	—

#### Operation

motor	●
radio-controlled motor	○*
manual operation with stainless steel winding handle	—
cord pulley system	—
manually operated crank handle for adjustment of the support post	—

#### Covers

sun silk snc (fabric series 324xx/329xx)	●
sun silk snc signature (fabric series 369xx)	●
acrylic 34 (fabric series 341xx-347xx)	●
sunvas (fabric series 315xx)	○
widely woven acrylic (fabric series 349xx)	—
sun silk perla FR (fabric series 374xx/379xx)	○
perfortex (fabric series 333xx)	● <sup>1</sup>
transolair (fabric series 339xx)	●
Trevira CS	—
Soltis 92	○
PVC fabric	—

#### Miscellaneous

wall sealing profile	○ <sup>1</sup>
frame system markilux RS 8000	—
zip system	○
cover profiles for gap between side rails and cover	—
sun sensor and wind sensor	○

#### Coupled units (please refer to the section on awning installation)

coupled unit, 2 fields	○
coupled unit, 3 fields	○

- = standard specification
- = optional accessories
- = not available
- \* = radio-controlled motor using 433 MHz technology
- <sup>1</sup> = effective up to a maximum awning pitch of 15°
- <sup>1</sup> = not available for awnings with zip system

#### Housing tolerances / Awning cover dimensions

	width	extension
housing tolerance	+5 / -10	
awning cover width = fixture width less	90*	
awning cover length = awning projection less / plus		on request

\* for standard units. Upon request for units with zip system dimensions in mm  
The width of the awning cover is always **less** than the width of the awning.

**Pitch adjustment range:** from 5° to 45° (to the horizontal).

**Water drainage** can only be guaranteed at a minimum awning pitch of 14° to the horizontal. If the markilux pergola is to be used as rain protection and the pitch is less than 14°, we recommend the markilux pergola 210 be used.

**Definition of fixture width/order width:** The fixture width is the measurement centre to centre from guide track to guide track. The overall width of the cassette is 100 mm greater than the fixture width of the awning. The fixture width tolerance is + 0 mm / - 20 mm.

**Definition of the extension / dimension to be ordered:** The nominal extension is measured with the awning extended from the back of the cassette to the leading edge of the front profile. The tolerance in the extension is + 40 / - 40 mm. The tolerance in the extension is + 40 / - 40 mm.

**Definition of operating side:** the operating side is always given as if seen from the outside (right or left).

**N.B.!** In the case of **continuous motor usage**, the motor may stop after 3 to 4 minutes to prevent overheating.

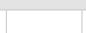
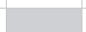

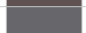
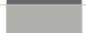


**N.B.!** In contrast to standard motors, radio-controlled motors have no safety cut-out mechanism if the front profile is obstructed. If this function is required in combination with radio-controlled operation, order the hard-wired motor with an external radio receiver and an appropriate transmitter.

**N.B.!** In the case of a bank of awnings operating simultaneously, the same speed of rotation of the motors cannot be guaranteed because of the internal tolerances of the motors.

**The extension time** of single units with a hard-wired motor is approximately 11 seconds per metre.

The front support posts are made of aluminium, standard height 2500 mm, other heights on request

#### Frame colours

traffic white - RAL 9016		●
metallic aluminium - RAL 9006		●
grey brown - similar to RAL 8019		●
anthracite metallic - 5204 (Lounge)		●
nano stone grey metallic - 5215 (Lounge)		○
off-white textured finish - 5233 (Lounge)		○
non-standard powder-coated finish		○

Colours similar to the RAL chart - these may differ slightly from those depicted in both hue and finish.

## Dimensions and configuration options

### Coupled unit, 2 fields, 1 or 2 motors

		fixture / order width						
		600	700	800	900	1000	1100	1200
		551-600	601-700	701-800	801-900	901-1000	1001-1100	1101-1200
overall width		+ 10						
extension	150							
	200							
	250							
	300							
	350							
	400							
	450							
	500							
	550							
	600							
number of brackets		from 451 cm fixture width per single field 3 brackets per field						

■ = available, optionally with zip system dimensions in cm

Coupled pergolas are available up to a max. width of 3 single units (3 fields) sided by side.

In the case of coupled units with 2 or 3 fields and 2 motors **unequal running speeds** due to tolerances in the motor speeds can occur.

In the case of **coupled units** with **fields of differing sizes** smooth rolling-up behaviour of the covers cannot be guaranteed. This has no bearing on the functionality or the durability of the cover.

The matrices above assume equal field widths in coupled awnings.

In the case of coupled units **up to a fixture width of 700 cm** the cassette will be supplied **in one piece**. If, for transportation or fixture reasons, the cassette needs to be split, please note this explicitly when ordering.

The rate of extension of coupled units with **2 fields, 1 Motor and 3 fields, 2 motors** is approximately **16 seconds per metre**. In the case of coupled units with **2 fields, 2 motors** extension takes as long as with **single awnings** i.e. approx. **16 seconds per metre**.

In the case of **2 motors**, the individual motors can be operated independently of one another.

Maximum awning size: please refer to the table for single units! For dimensions possible with the zip system please also refer to the matrix for single units.

If coupled pergolas are fitted into a **recess** or **reveal** the overall width of the coupled awning must be at least 6 cm less than the width of the opening to allow the pergola to be coupled. Make a special note if an awning is to be fitted into a recess or reveal and note the recess/reveal dimensions separately on the order.

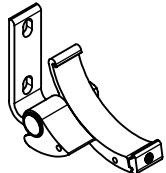

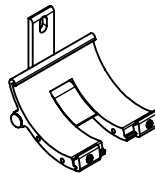
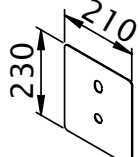
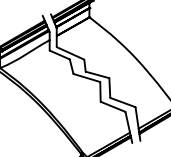
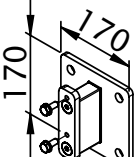
### Coupled unit, 3 fields, 2 motors

		fixture / order width												
		600	700	800	900	1000	1100	1200	1300	1400	1500	1600	1700	1800
		551-600	601-700	701-800	801-900	901-1000	1001-1100	1101-1200	1201-1300	1301-1400	1401-1500	1501-1600	1601-1700	1701-1800
overall width		+ 10												
extension	150													
	200													
	250													
	300													
	350													
	400													
	450													
	500													
	550													
600														
	number of brackets	from 451 cm fixture width per single field 3 brackets per field												

■ = available, optionally with zip system

dimensions in cm

## Fixtures, fittings and accessories

 <p>Face fixture bracket assembly</p> <p>left</p> <p>pitch adjustment possible from 5° to 45°</p> <p>76063.</p>	 <p>Face fixture bracket assembly</p> <p>right</p> <p>from 5° to 45° pitch adjustment range</p> <p>76064.</p>	 <p>Cassette coupling bracket assembly</p> <p>Face fixture</p> <p>central</p> <p>from 5° to 45° pitch adjustment range</p> <p>76181.</p>
 <p>Cover plate for installation with spacer plate 77956. in the case of external insulation</p> <p>210 x 230 mm</p> <p>71844.</p>	 <p>wall sealing profile</p> <p>available by the metre</p> <p>fixture example: see face fixture with wall sealing profile</p> <p>77780.</p>	 <p>Spacer plates for 76063., 76064. and 76181.</p> <p>for face fixture</p> <p>length min 80 mm, max. 300 mm</p> <p>77956.</p>

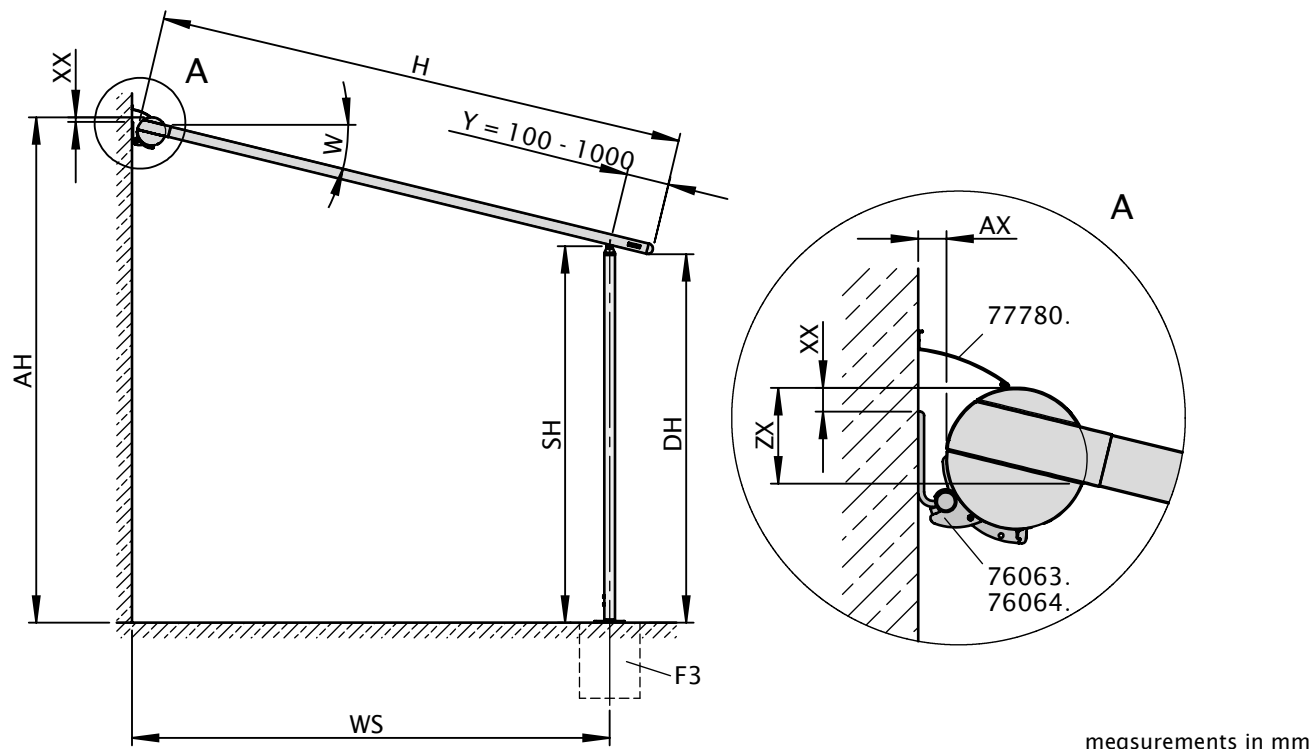


## Installation dimensions

Water drainage can only be guaranteed at a minimum awning pitch of 14° to the horizontal.

In contrast to the markilux 110, one of the front support posts of the markilux 210 can be lowered. This is an advantage especially when the installation height is restricted and ensures water drainage at a minimum pitch of at least 7°. By lowering the height of one support post by 30 cm water drainage can be guaranteed in rain.

### Dimensional overview, face fixture



$$AH = SH + ZX + \sin W \cdot (H - Y)$$

$$SH = AH - ZX - \sin W \cdot (H - Y)$$

$$WS = \cos W \cdot (H - Y) + AX$$

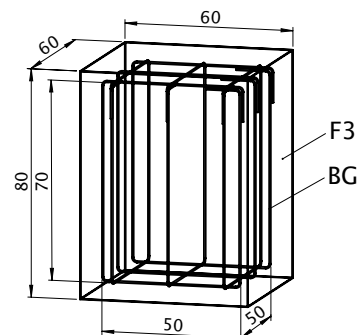
$$DH = SH - \sin W \cdot Y$$

W	AX	XX	ZX
5°	26	46	112
10°	32	38	120
15°	38	30	128
20°	44	22	135
25°	49	13	142
30°	54	4	149
35°	58	-5	156
40°	62	-15	161
45°	65	-24	167

A foundation F3 for each support post has to be constructed on site in accordance with the technical drawing:

- construct a base of armoured concrete with a compressive strength of C25/30 (previously known as B25) using 6 pieces of shaped steel rebar matting, Ø 6 mm
- Fixturing of the front base plates (F3) by means of stainless steel Fischer anchor bolts FAZ 10/30 and washer certified to DIN 9021 (or similar)

F3 = concrete base



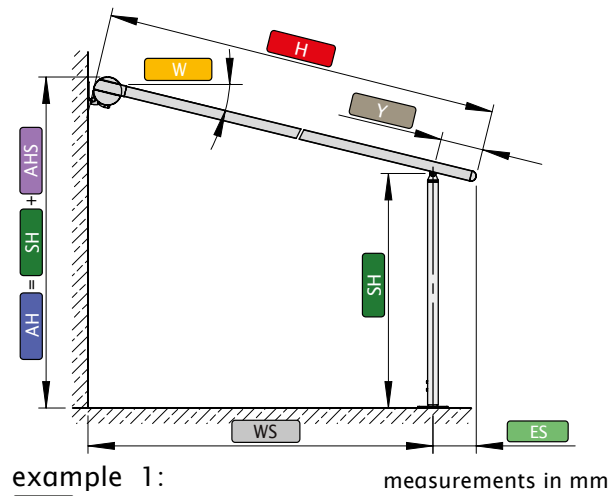
dimensions in cm

- H = extension  
 AH = fixture height  
 W = pitch  
 WS = distance from wall to support post centre  
 SH = support post height, standard height 2500 mm (special heights on request)  
 Y = the support post can be moved in by a min. of 100 mm and a maximum of 1000 mm  
 DH = headroom  
 AX = calculation value for the distance wall to support post centre WS (see table)  
 XX = distance from upper edge of fixture bracket to upper edge of cassette (see table)  
 ZX = calculation value for installation height AH (see table)  
 77780 = wall sealing profile (optional), effective up to a maximum awning pitch of 15°  
 76063 = face fixture cassette bracket assembly, left  
 76064 = face fixture cassette bracket assembly, right  
 BG = rebar matting basket made of 6 pieces of steel rebar, Ø 6 mm  
 F3 = concrete foundation

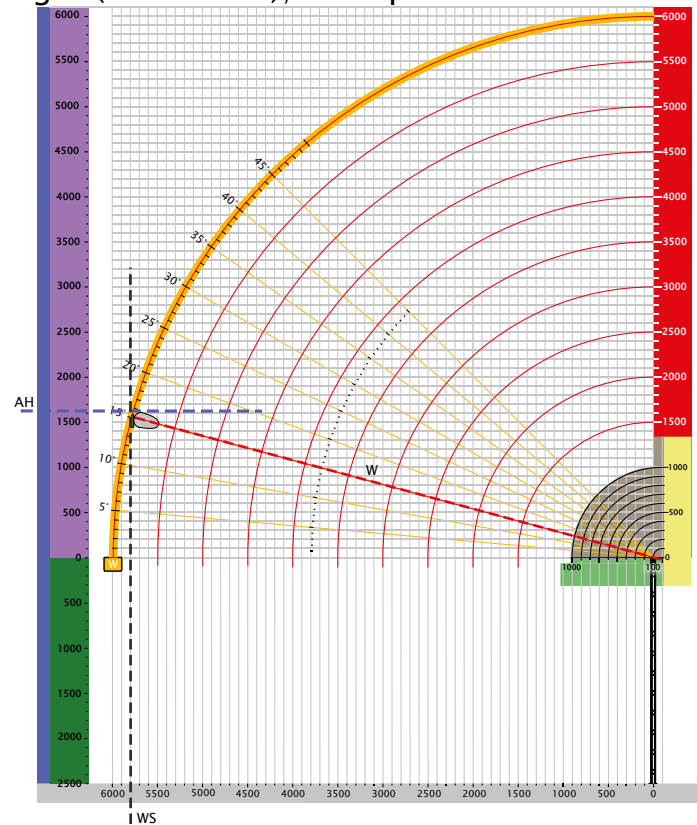
## Installation dimensions

### Calculation of the approximate fixture height (theoretical), examples

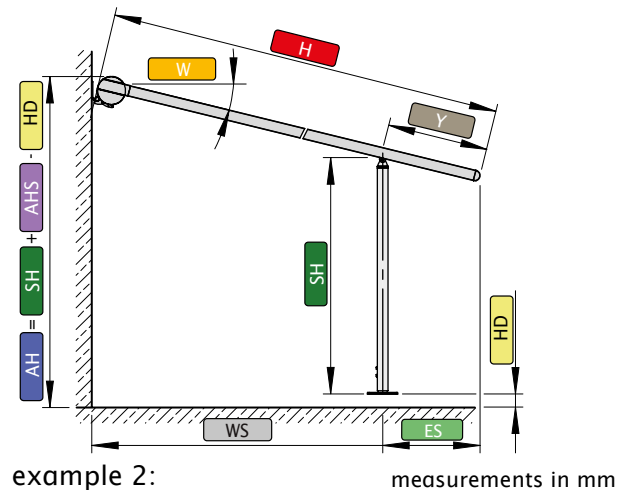
1. front support posts, pushed as far out as possible,  $Y = 100$  mm



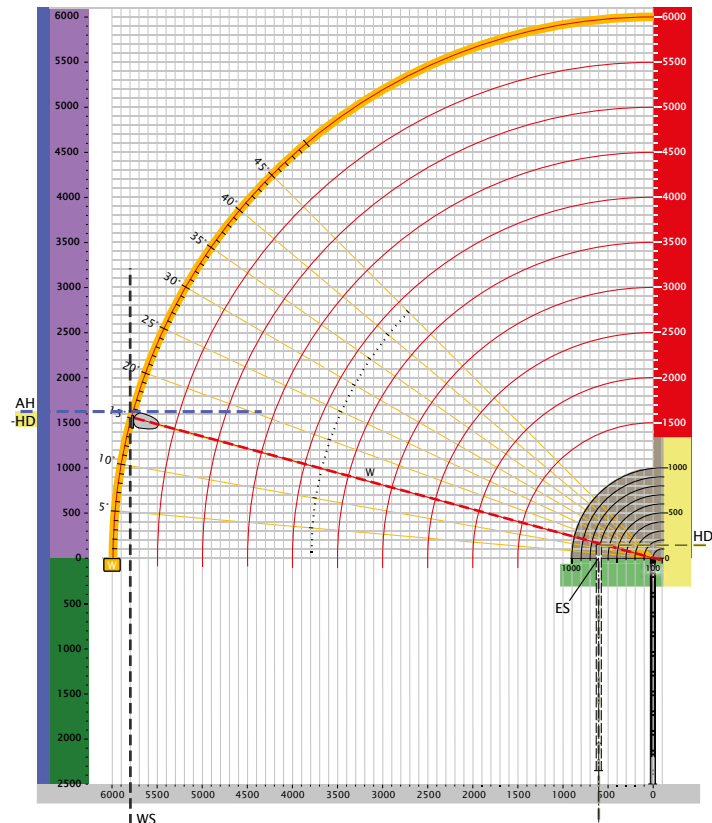
ES	=	700
W	=	15°
H	=	6000
WS	=	5200
Y	=	700
HD	=	130
SH	=	2500
AHS	=	1620
AH	=	SH + AHS - HD = 2500 + 1620 - 130 = 3990



2. front support posts, pushed as far in as possible,  $100 \text{ mm} \leq Y \leq 1000 \text{ mm}$



ES	=	700
W	=	15°
H	=	6000
WS	=	5200
Y	=	700
HD	=	130
SH	=	2500
AHS	=	1620
AH	=	SH + AHS - HD = 2500 + 1620 - 130 = 3990



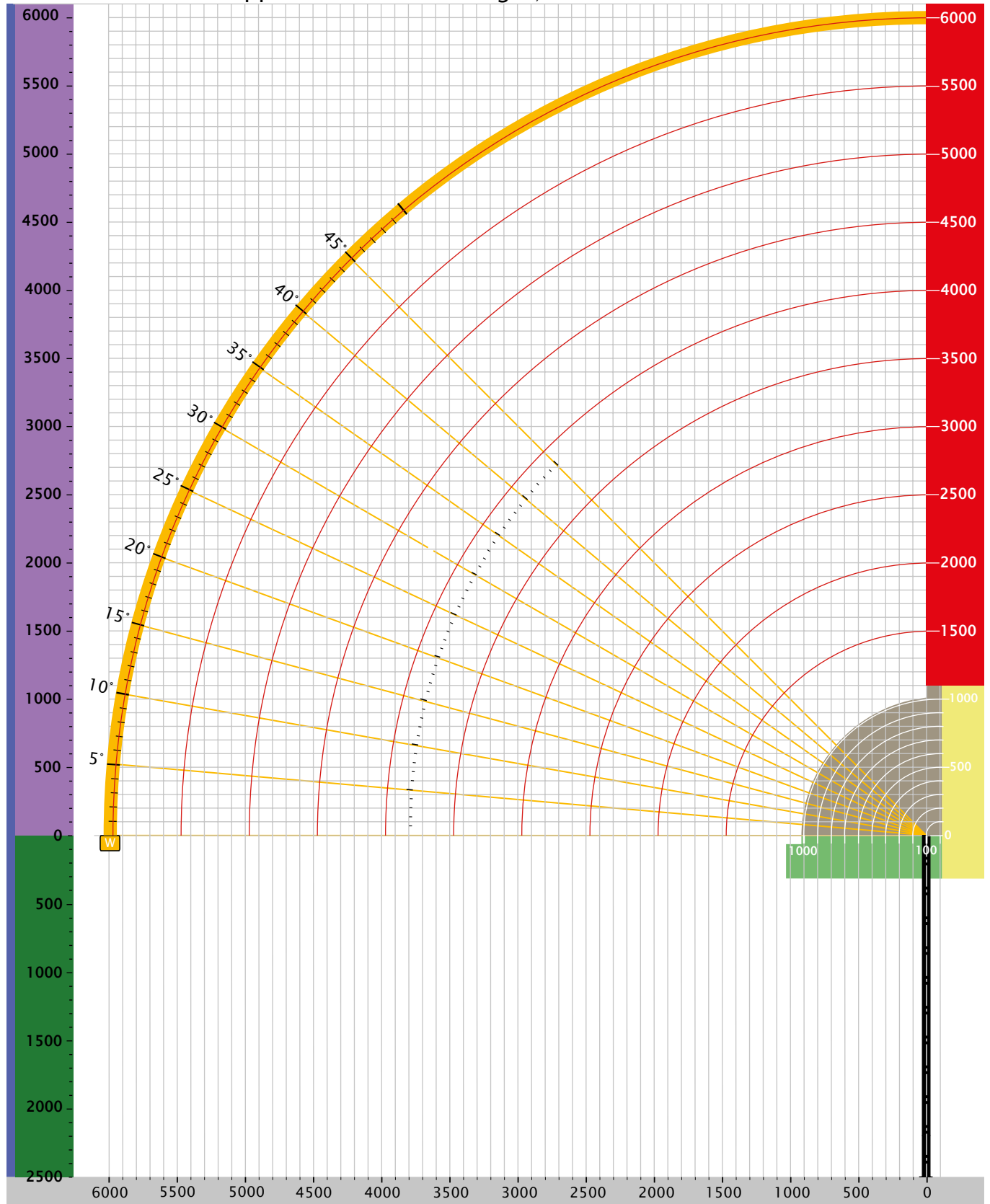
H	=	extension	AH	=	fixture height	AHS	=	fixture height from the top edge of the support post
W	=	pitch	ES	=	end of the guide track - middle support post	HD	=	difference to the fixture height
WS	=	distance from wall to support post	SH	=	support post height, standard height 2500 mm	Y	=	distance front support posts have been moved in

Speci-  
ficationmarkilux  
1700markilux  
1700  
stretchmarkilux  
1710markilux  
1710  
stretchmarkilux  
8800 /  
8800 zipmarkilux  
8850markilux  
889 /  
889 zipmarkilux  
869 /  
869 zipmarkilux  
pergola 110markilux  
pergola 210markilux  
synca 2 fix  
/ uno fix  
with  
folding-arm  
awningsmarkilux  
synca 2 fix  
/ uno fix  
with  
pergola  
110 / 210Optional  
AccessoriesTechnical  
Information

Order Forms

## Installation dimensions

Calculation of the approximate fixture height, theoretical

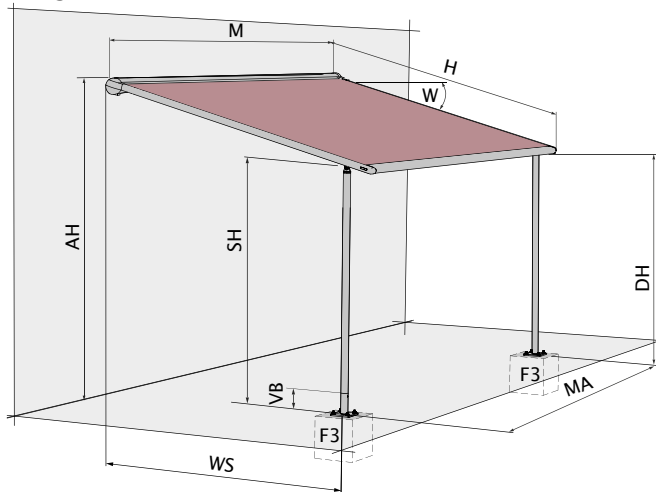


measurements in mm

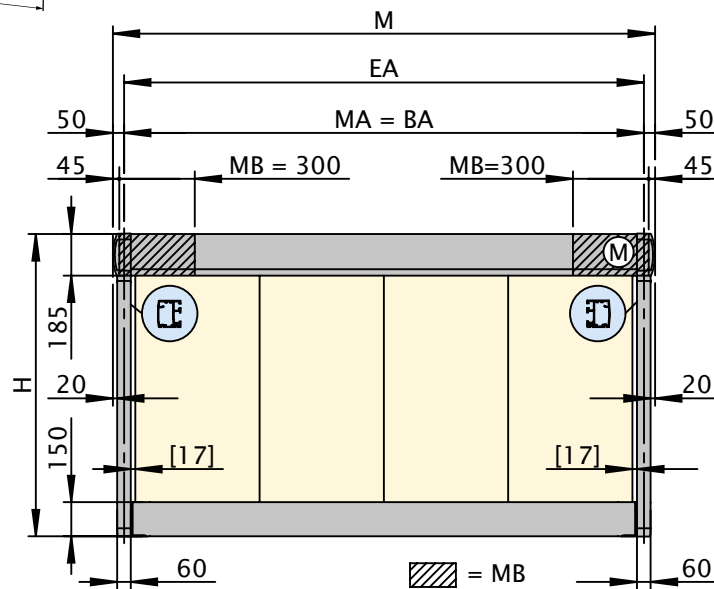


## Installation dimensions

### Single unit 1 field, 1 motor

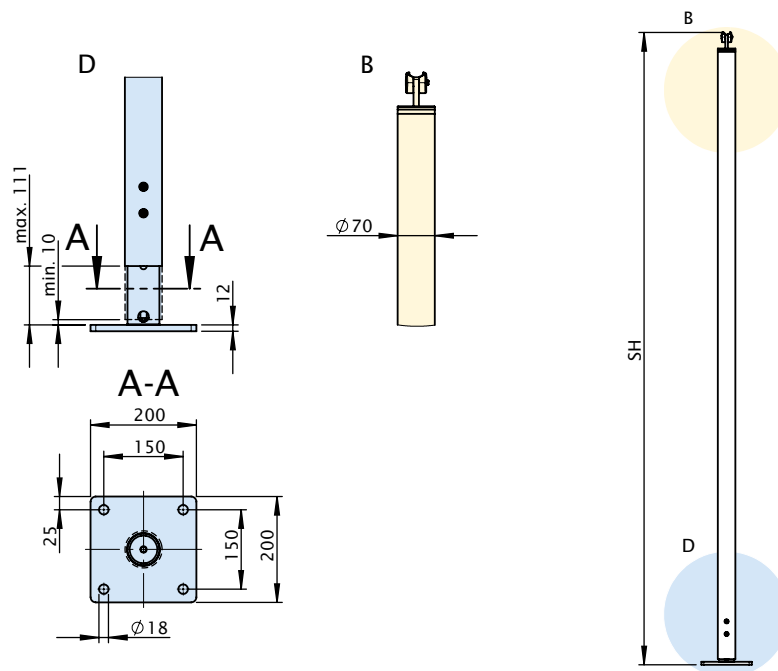


- M = overall awning width = MA + 10 cm
- MA = awning fixture width = order width
- H = extension
- AH = fixture height
- SH = support post height, standard height 2500 mm (special heights on request)
- DH = headroom
- W = awning pitch = 5° to 45°
- VB = height adjustment 10 cm
- WS = distance from wall to support post
- F3 = concrete foundation (refer to section "Dimensional overview, face fixture")
- EA = single unit
- BA = awning fixture width = width between fixing points = order width
- MB = bracket fixture range
- M = motor drive operation side
- [...] = dimensions of the cover gap for standard units,  
no cover gap for units with zip system
- D = detail: height adjustment at the base of both the front  
support posts during installation approximately 100 cm
- B = detail: support post



measurements in mm

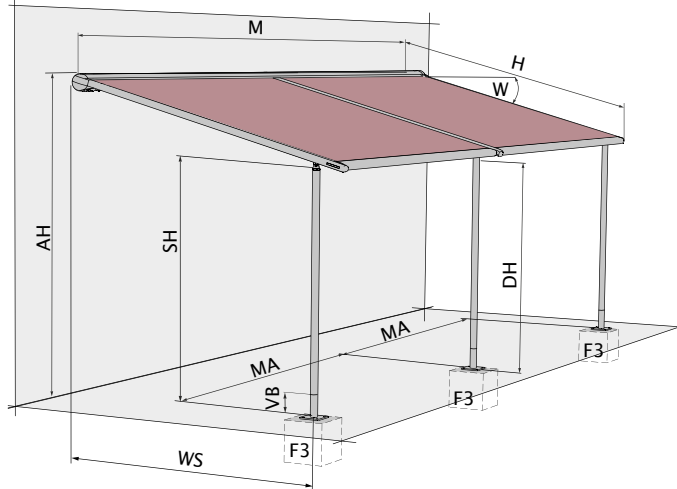
### Front support posts



measurements in mm

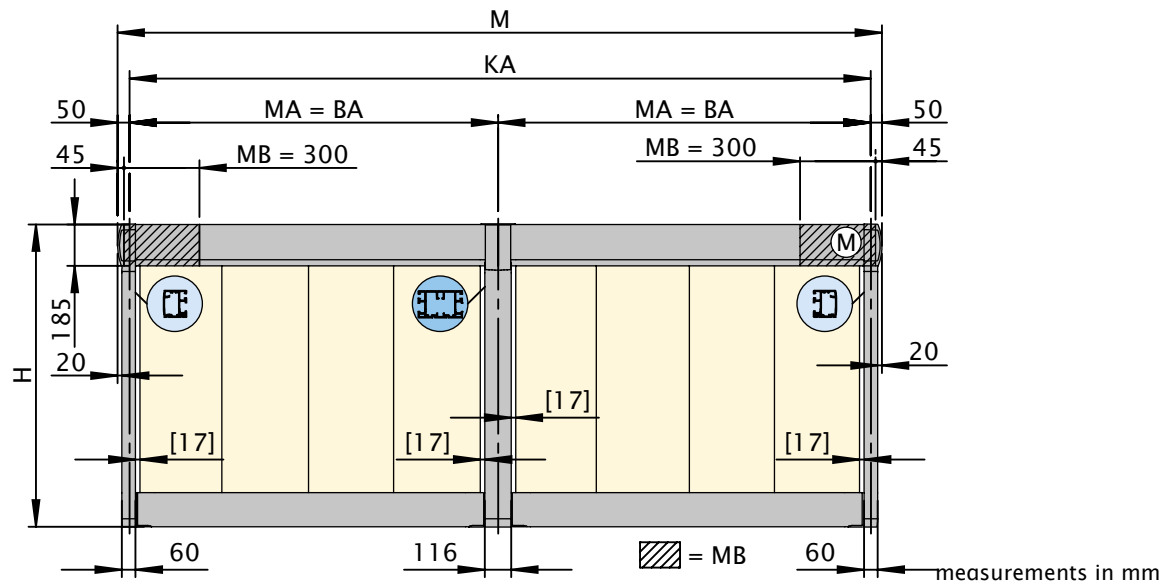
## Installation dimensions

### Coupled units

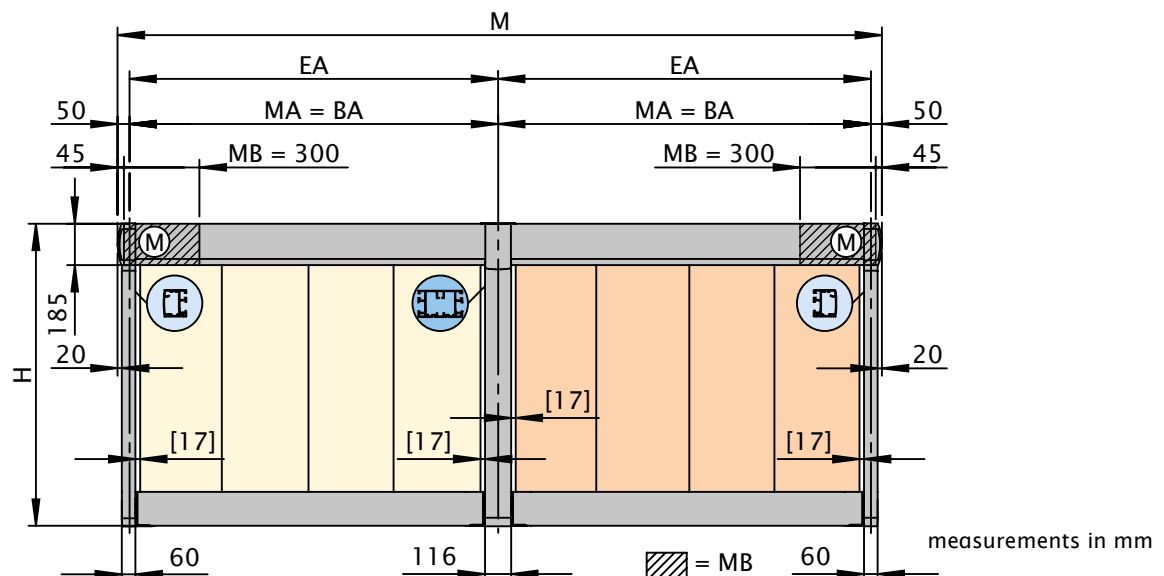


- M = overall awning width = MA + 10 cm
- MA = awning fixture width = order width
- H = extension
- AH = fixture height
- SH = support post height, standard height 2500 mm (special heights on request)
- DH = headroom
- W = awning pitch = 5° to 45°
- VB = height adjustment 10 cm
- WS = distance from wall to support post
- F3 = concrete foundation (refer to section "Dimensional overview, face fixture")
- EA = single unit
- KA = coupled unit
- BA = awning fixture width = width between fixing points = order width
- MB = bracket fixture range
- (M) = motor drive operation side
- [...] = dimensions of the cover gap for standard units, no cover gap for units with zip system

### Coupled units, 2 fields, 1 motor

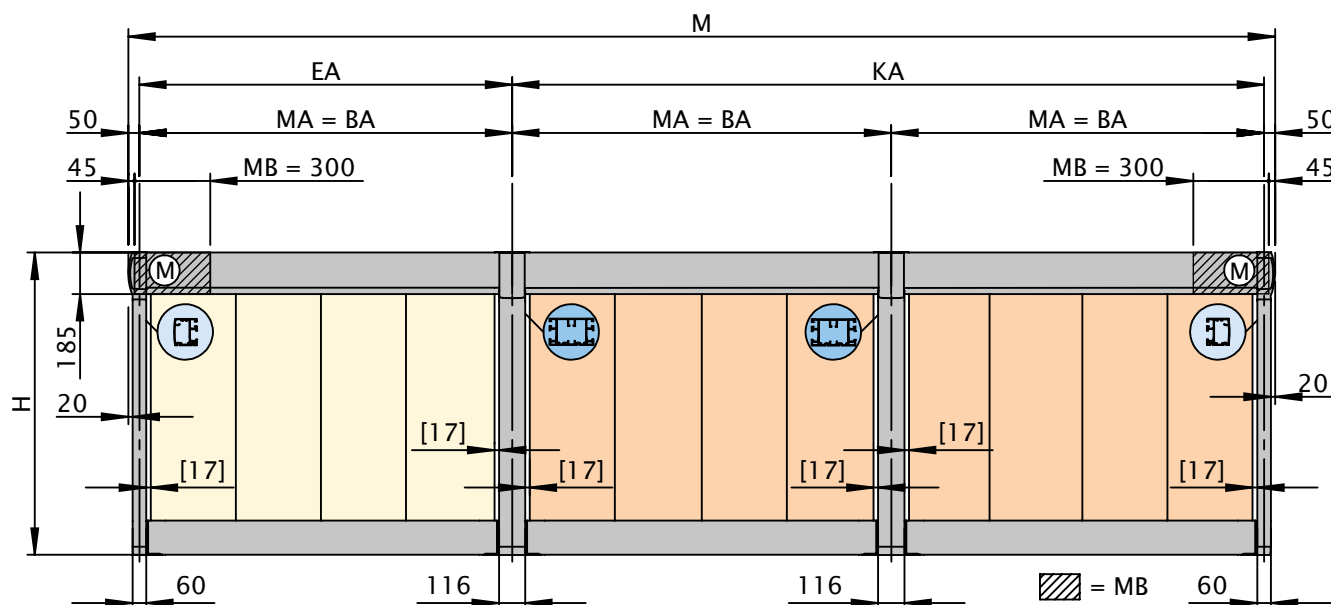


### Coupled units 2 fields, 2 motors



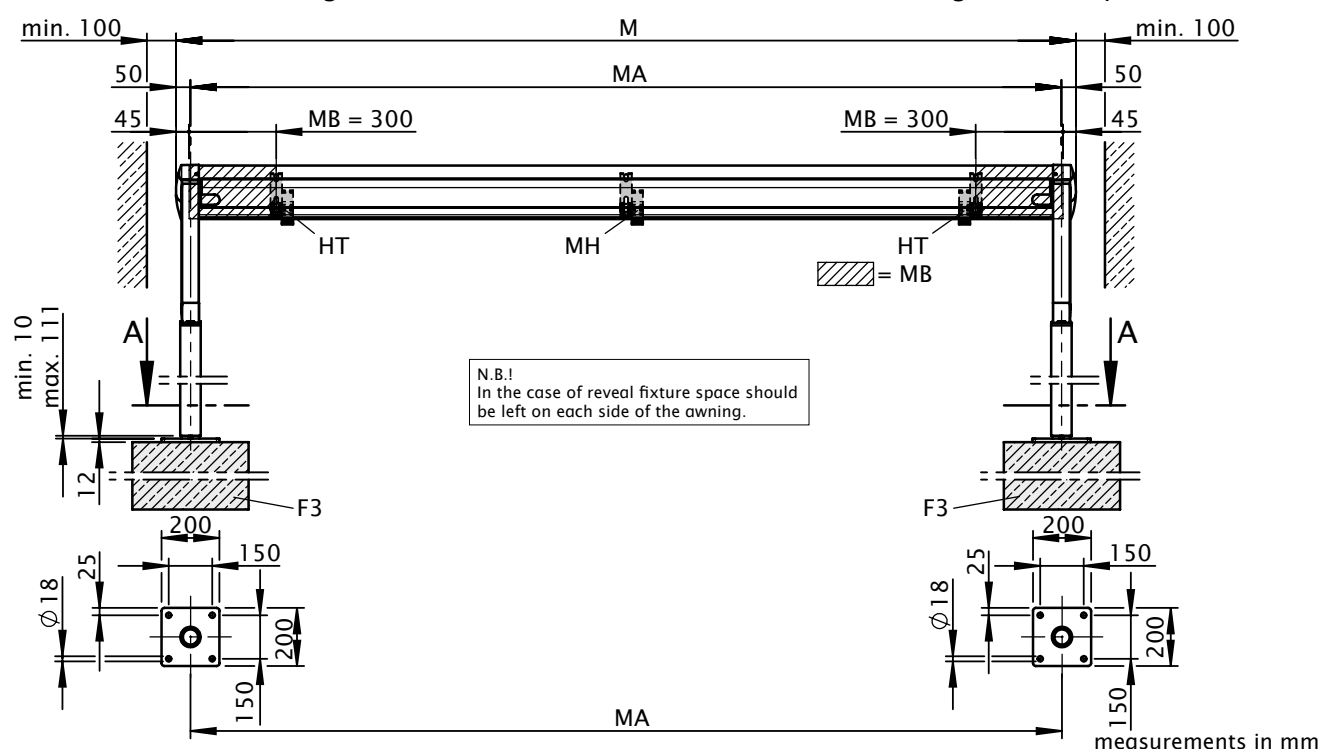
## Installation dimensions

Coupled units 3 fields, 2 motors



measurements in mm

Face fixture bracket range / dimensions in the case of reveal fixture (single and coupled units)

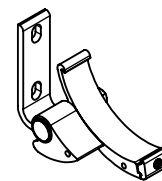
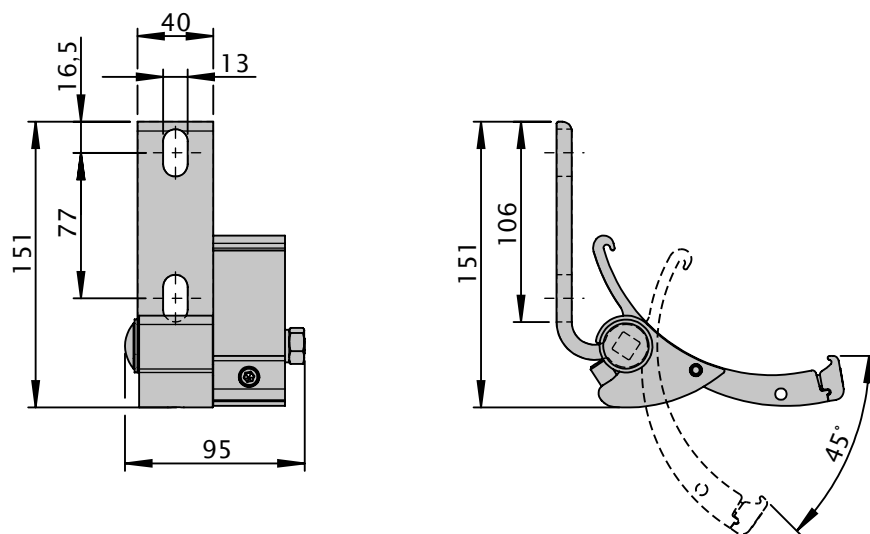


measurements in mm

- M = overall awning width = MA + 10 cm  
 MA = awning fixture width = order width  
 H = extension  
 EA = single unit  
 KA = coupled unit  
 BA = awning fixture width = width between fixing points = order width  
 MB = bracket fixture range  
 (M) = motor drive operation side  
 [...] = dimensions of the cover gap for standard units, no cover gap for units with zip system  
 HT = bracket  
 MH = from an awning width of 451 cm an additional face fixture bracket (76063.) is required  
 F3 = concrete foundation (refer to section "Dimensional overview, face fixture")

## Installation dimensions

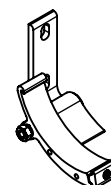
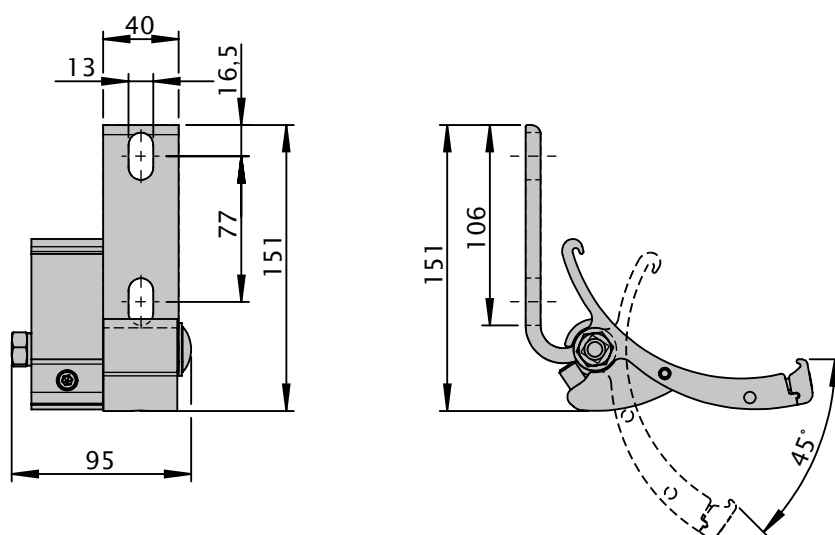
Face fixture cassette bracket assembly, left



76063.

measurements in mm

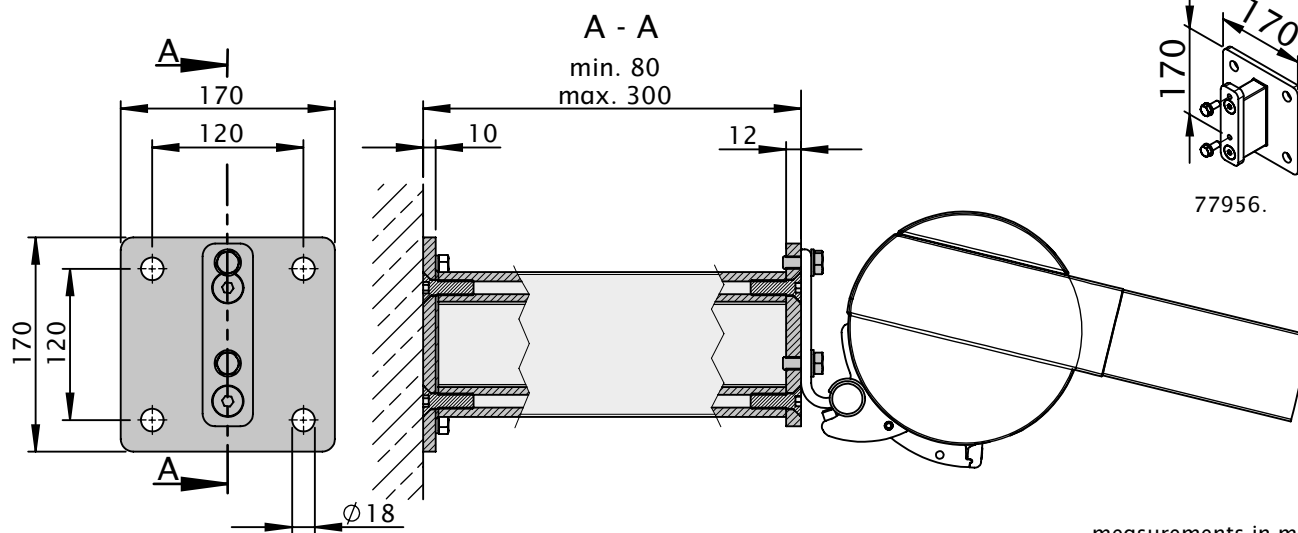
Face fixture cassette bracket assembly, right



76064.

measurements in mm

Face fixture with stand-off brackets

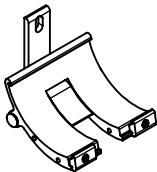
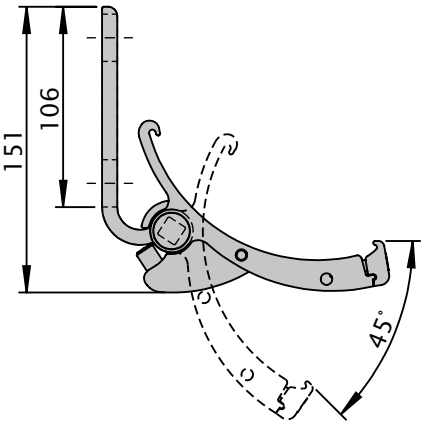
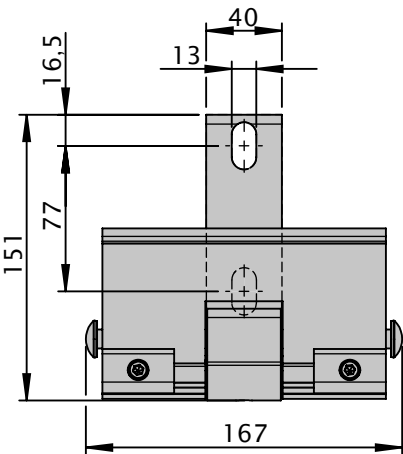


77956.

measurements in mm

Installation dimensions

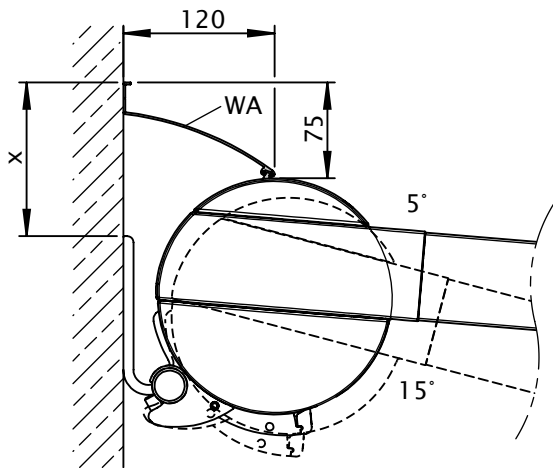
Cassette coupling bracket assembly (central in the case of coupled units)



76181.

measurements in mm

Face fixture with wall sealing profile



W	x
5°	122
10°	114
15°	105
20°	—
25°	—
30°	—
35°	—
40°	—
45°	—

measurements in mm



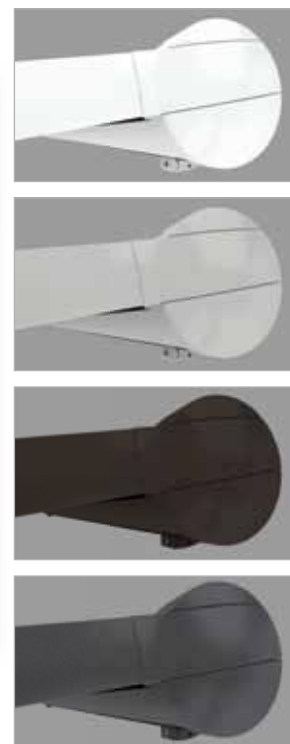


## markilux pergola 210

Stylish and extra sturdy – solar and weather protection for large areas. Large-scale solar protection for patios – the proven technology of the markilux 8800 conservatory awning with slender support posts – optionally with zip system



**markilux**



## markilux pergola 210

Stylish and extra sturdy – solar and weather protection for large areas. Large-scale solar protection for patios – the proven technology of the markilux 8800 conservatory awning with slender support posts – optionally with zip system

### Design features

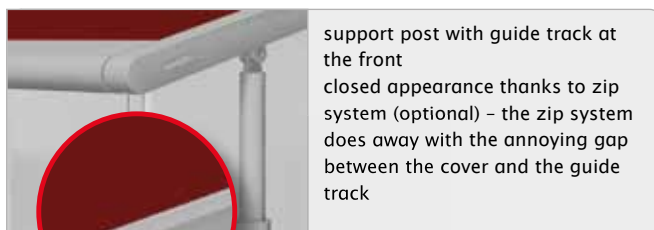
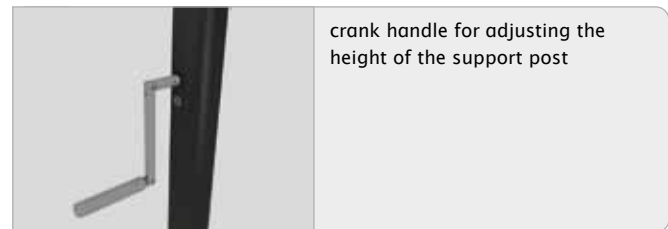
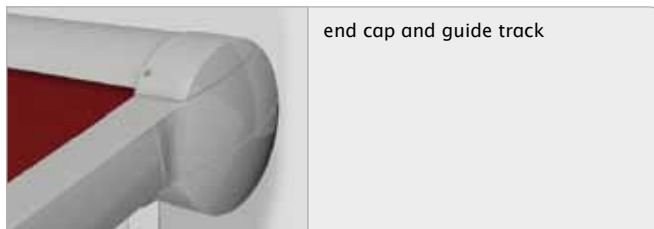
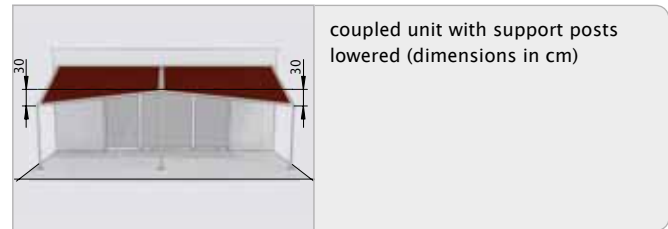
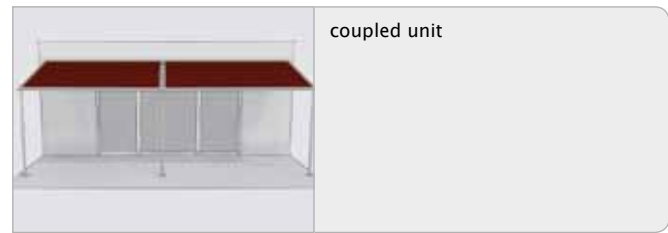
- an elegant awning system resting on slender posts with unobtrusive lateral guide tracks
- the cassette profile, the guide tracks, the front profile and the front support posts complement one another perfectly and result in a large but nevertheless very elegant patio shading system
- powder coated in the standard colours traffic white, metallic aluminium or grey brown

### Technical Specifications

- manual height adjustment possible on one side – to ensure water drainage at a minimum pitch of at least 7°; if the pitch is at least 14° water drainage can be guaranteed even if the support post is not lowered
- manual adjustment of the support post by up to 30 cm by means of an internal screw-driven lift operated by a winding crank handle
- as standard, the front support posts have a height of 250 cm, bespoke heights (151 cm to 250 cm) on request

### Additional features

- coupled units up to two fields wide are available in the markilux pergola 210
- radio-controlled motor with markilux remote control – ergonomically shaped
- wall sealing profile to cover the gap between awning and wall; effective up to an awning pitch of 25°
- awning covers made of waterproof sunsilk, markilux perla FR, are available at a surcharge
- the zip system creates a completely closed appearance without any annoying gap between cover and guide track.



### Standard specification

motor

sunsilk snc fabric

sunsilk snc signature fabric

acrylic fabric 34

perfortex fabric

transolair fabric

### Standard frame colours

traffic white - RAL 9016

metallic aluminium - RAL 9006

grey brown - similar to RAL 8019

anthracite metallic - 5204

### Optional accessories

RTS motor with remote control

sun sensor and wind sensor

zip system

wall sealing profile

additional second adjustable support post

sunvas fabric


non-standard powder-coated finish

## Dimensions and configuration options

Single unit; 1 field, 1 motor

		awning fixture width / order width							
		250	300	350	400	450	500	550	600
		201 - 250	251 - 300	301 - 350	351 - 400	401 - 450	451 - 500	501 - 550	551 - 600
overall width		+10							
extension	300								
	350								
	400								
	450								
	500								
	550								
	600								
number of brackets		2				3			

dimensions in cm

 = available, optionally with zip system

### Type of shading

exterior	●
interior	—

### Operation

motor	●
radio-controlled motor	○*
manual operation with stainless steel winding handle	—
cord pulley system	—
crank handle for adjustment of the support post	●

### Covers

sun silk snc (fabric series 324xx/329xx)	●
sun silk snc signature (fabric series 369xx)	●
acrylic 34 (fabric series 341xx-347xx)	●
sunvas (fabric series 315xx)	○
widely woven acrylic (fabric series 349xx)	—
sun silk perla FR (fabric series 374xx/379xx)	○
perfortex (fabric series 333xx)	● <sup>1</sup>
transolair (fabric series 339xx)	●
Trevira CS	—
Soltis 92	○
PVC fabric	—

### Miscellaneous

wall sealing profile	○ <sup>1</sup>
frame system markilux RS 8000	—
zip system	○
cover profiles for gap between side rails and cover	—
sun sensor and wind sensor	○

### Coupled units (please refer to the section on awning installation)

coupled unit, 2 fields	○
coupled unit, 3 fields	○

- = Standard specification
- = Optional accessories
- = not available
- \* = radio-controlled motor using 433 MHz technology
- <sup>1</sup> = effective up to a maximum awning pitch of 15°
- <sup>1</sup> = not available for awnings with zip system

Housing tolerances / Awning cover dimensions	width	extension
housing tolerance	+5 / -10	
awning cover width = fixture width less	60*	
awning cover length = awning projection less / plus		on request

\* for standard units. Upon request for units with zip system dimensions in mm

The width of the awning cover is always **less** than the width of the awning.

**Pitch adjustment range:** from 5° to 45° (to the horizontal).

**Water drainage** can only be guaranteed at a minimum awning pitch of 14° to the horizontal. If the markilux pergola is to be used as rain protection and the pitch is less than 14°, water drainage can be guaranteed by lowering the adjustable post of the awning. The pitch on installation must, however, be at least 7°.

**Definition of fixture width/order width:** The fixture width is the measurement centre to centre from guide track to guide track. The overall width of the cassette is 100 mm greater than the fixture width of the awning. The fixture width tolerance is + 0 mm / - 20 mm.

**Definition of the extension / dimension to be ordered:** The nominal extension is measured with the awning extended from the back of the cassette to the leading edge of the front profile. The tolerance in the extension is + 40 / - 40 mm. The tolerance in the extension is + 40 / - 40 mm.

**Definition of operating side:** the operating side is always given as if seen from the outside (right or left).

**Installation dimensions:** The same installation dimensions are valid for the pergola 210 as for the pergola 110 (in this respect please consult the page "Installation dimensions" pergola 110)

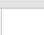
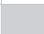





**N.B.!** In the case of continuous motor usage, the motor may stop after 3 to 4 minutes to prevent overheating.

**N.B.!** In contrast to standard motors, radio-controlled motors have no safety cut-out mechanism if the front profile is obstructed. If this function is required in combination with radio-controlled operation, order the hard-wired motor with an external radio receiver and an appropriate transmitter.

**N.B.!** In the case of a bank of awnings operating simultaneously, the same speed of rotation of the motors cannot be guaranteed because of the internal tolerances of the motors.

**The extension time** of single units with a hard-wired motor is approximately 11 seconds per metre.

### Frame colours

traffic white - RAL 9016		●
metallic aluminium - RAL 9006		●
grey brown - similar to RAL 8019		●
anthracite metallic - 5204 (Lounge)		○
nano stone grey metallic - 5215 (Lounge)		○
off-white textured finish - 5233 (Lounge)		○
non-standard powder-coated finish		○

Colours similar to the RAL chart - these may differ slightly from those depicted in both hue and finish.

