

# INT - 3.01 SCH 43 95 50 / 70

## INTERNAL MANUAL BLACKOUT SYSTEMS

CHAIN OPERATED BLACKOUT ROLLER BLIND SYSTEMS

### APPLICATION SCH 43 95 50 / 70

The Helioscreen full blackout system is extremely versatile and is ideal for situations where a complete light block out is necessary like boardrooms and home theatres in both commercial and domestic applications. The system features stylish steel side channels with double internal brushes. As with all Helioscreen Roller Blinds stainless steel chains come as standard. The Warranty on the Helioscreen chain operated Blackout systems is 5-years.

### SYSTEM SPECIFICATIONS SCH 43 95 50 / 70

<b>MINIMUM WIDTH</b>	600mm
<b>MAXIMUM WIDTH</b>	2400mm
<b>MAXIMUM DROP</b>	3200mm
<b>LINKABLE</b>	Yes up to 3 blinds

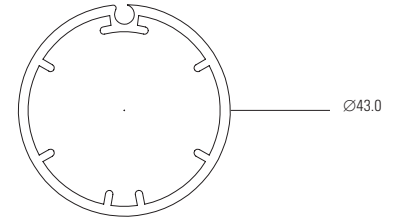
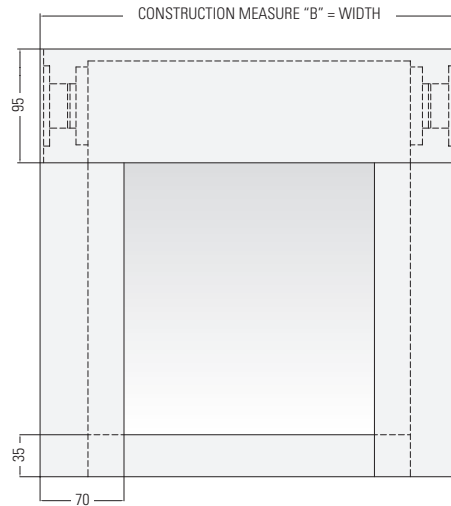
### TECHNICAL INFORMATION SCH 43 95 50 / 70

<b>BRACKETS</b>	<ul style="list-style-type: none"><li>• Press formed steel, pre-treated and powder coated</li><li>• Bracket/pelmet projection 95mm</li></ul>
<b>CONTROL END</b>	<ul style="list-style-type: none"><li>• Sprocket with sprocket guard</li><li>• Parts made with high strength fibreglass reinforced polyester and high carbon steel</li><li>• Spring friction system</li><li>• Continuous stainless steel chain</li></ul>
<b>TUBE</b>	<ul style="list-style-type: none"><li>• 100% extruded aluminium</li><li>• 43mm outside diameter</li><li>• 1.6mm wall thickness</li></ul>
<b>HEAD BOX</b>	<ul style="list-style-type: none"><li>• 95mm 3 piece extruded slotted aluminium head box</li><li>• Head box to be custom powder coated</li></ul>
<b>SIDE CHANNELS</b>	<ul style="list-style-type: none"><li>• 50mm x 26mm blackout side channels with compressible blackout brush seal when blinds are up to 2m wide</li><li>• 70mm x 26mm blackout side channels with compressible blackout brush seal when blinds are over 2m wide</li></ul>
<b>IDLE END</b>	<ul style="list-style-type: none"><li>• Comprises of an outside sleeve and centre shaft</li><li>• Roller rides on bearing surface</li></ul>
<b>BASE BAR</b>	<ul style="list-style-type: none"><li>• 18mm x 35mm extruded aluminium base bar helio style with compressible blackout brush seal</li><li>• Custom powder coating</li></ul>

INTELLIGENT  
SUN CONTROL  
SOLUTIONS®

# INT - 3.01 SCH 43 95 50 / 70

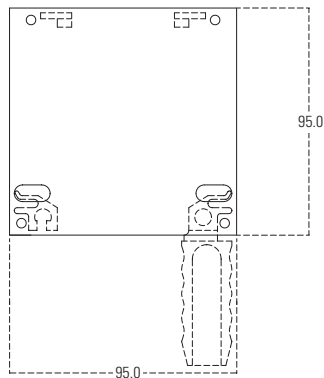
## 2D DIAGRAM SCH 43 95 50



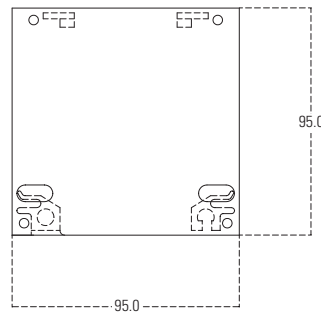
TUBE 43mm

## COMPONENTRY SCH 43 95 50 / 70

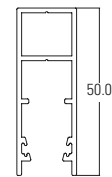
70mm HEADBOX END CAP



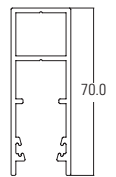
50mm HEADBOX END CAP



50mm SIDE CHANNEL

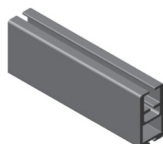
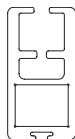


70mm SIDE CHANNEL



## BASE BAR SCH 43 95 50 / 70

HELIO



Helioscreen Australia Pty Ltd  
T +61 2 8426 1300  
F +61 2 9453 0744  
W [www.helioscreen.com.au](http://www.helioscreen.com.au)